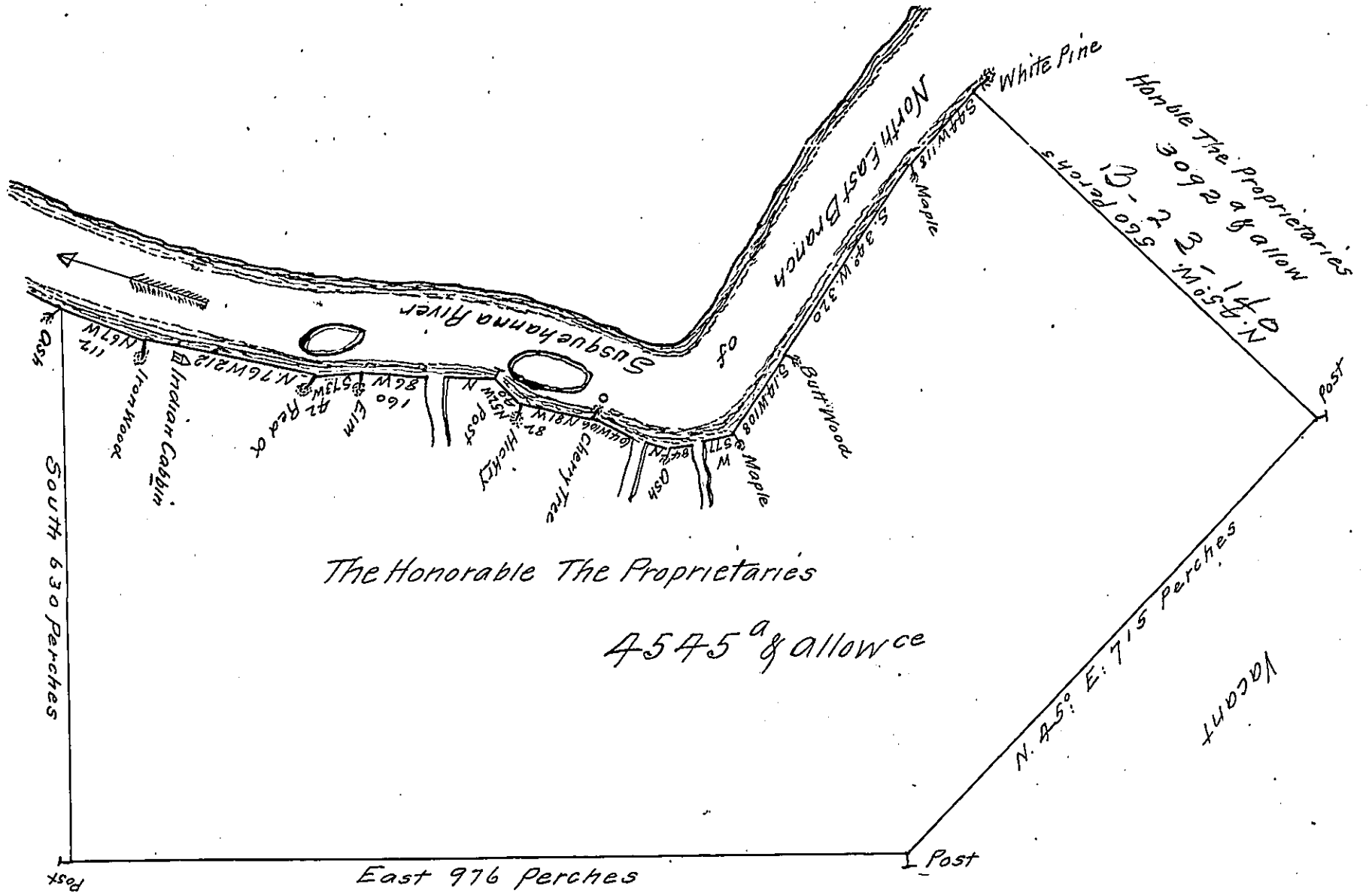


FORM No. 1.



*A Draught of a Tract of Land Called Pine Grove situate on the South East Side of the North East branch of Susquehanna River Beginning at a White Pine Tree standing on the Bank of the River and marked for a Corner to a Tract of 3092<sup>a</sup> Surveyed for The Honorable The Proprietaries, Then running down the River side One thousand three hundred and eighty four perches to an Ash Tree marked for a Corner on the aforesaid Bank Then running South 630 perches to a post, Thence East 976 p<sup>s</sup> to a post Thence North East 715 perches to a post, Thence North West 560 along a Line of the said 3092 Acres to the Beginning Containing four thousand five hundred & forty five Acres besides the usual allowance of 6 p<sup>s</sup> Cent for Roads & ca, Surveyed in pursuance of a Special order the 22<sup>dy</sup> & 23<sup>d</sup> Days of September 1773, For the Honorable The Proprietaries and in part of a Warrant for Ten thousand Acres dated the 27<sup>th</sup> of September A.D. 1773*

*To John Lukens Esqr Surveyor Genl*  
 IN TESTIMONY that the above is a copy of the original remaining on file in the Department of Internal Affairs of Pennsylvania, made conformably to an Act of Assembly approved the 16th day of February, 1833, I have hereunto set my Hand and caused the Seal of said Department to be affixed at Harrisburg, this Twentieth day of April 1910

By *Chas Stewart D<sup>r</sup> Sur<sup>r</sup>*  
 Henry Houch  
 Secretary of Internal Affairs.